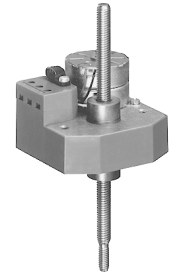


Linear damper actuator

GHD131.2E

for modulating control of dampers



Linear drive actuator for the control of volume regulators, ceiling outlets and dampers. Force 150 N; nominal voltage AC 24 V; 3-point control signal.

Use

The linear drive actuator can be mounted on air-handling units and ceiling outlets. It is used for the control of volume regulators and ceiling outlets in VAV systems and for damper adjustment in induction units and mixing boxes.

Z/C... assembly kits are available for the various applications described.

Functions

The actuator is suitable for use in conjunction with controllers with a proportional three-point AC 24 V output signal or for open/close control.

The stroke direction of the threaded spindle is determined by the terminal connections on the motor.

Types

Without spindle (standard)	With spindle 130 mm	With spindle 180 mm	With spindle 230 mm	With spindle 300 mm
GHD131.2E	GHD131.2E/130	GHD131.2E/180	GHD131.2E/230	GHD131.2E/300

Ordering

The GHD131.2E/... linear drive actuator and the Z/C... assembly kit must be ordered separately.

The threaded spindle is normally supplied as part of the assembly kit.

When ordering, please specify the quantity, product name and type code.

Example:

10 linear actuators, type GHD131.2E and 10 assembly kits, type Z/C27

Technology

The rotary action of the reversible synchronous motor is converted via a drive gear into the linear movement of the spindle. The drive gear is mounted between two metal plates protected from dust by a plastic sleeve. The drive gear incorporates a magnetic overload clutch, so that end switches, and the associated time-consuming adjustments, are not required. The clutch protects the actuator for brief periods against overload. However, operating the actuator in a continuously stalled condition will considerably reduce its service life. This must be avoided by suitable control provisions (e.g. positioning time control).

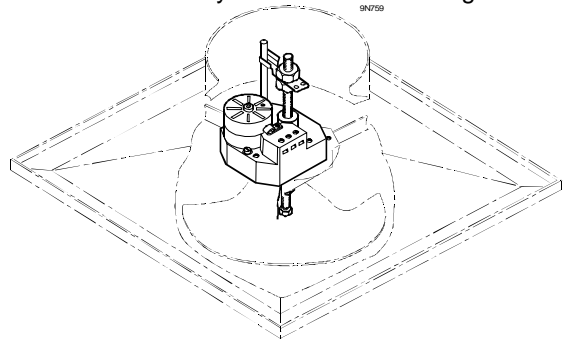
Accessories

Z/C... assembly kits are available from Landis & Staefa for the various brands of dampers and air outlets.

Please contact Landis & Staefa for more information.

Mounting instructions

The actuators may be mounted in any orientation. The spindle must be able to travel freely in and out, and care must be taken to eliminate any lateral and/or twisting force. Where necessary, a swivel or similar mechanical coupling (e.g. a universal swivel joint) must be used. Unsuitable mounting can affect the positioning speed.



Example:
GHD131.2E linear actuator
in a ceiling outlet

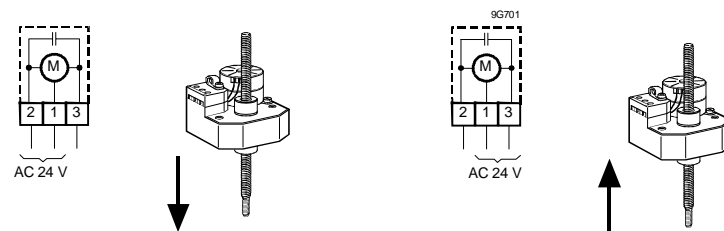
Maintenance

The GHD131.2E actuator itself requires no maintenance. Care should be taken, however, to ensure that the spindle always moves freely. It should be cleaned and greased periodically as necessary.

Technical data

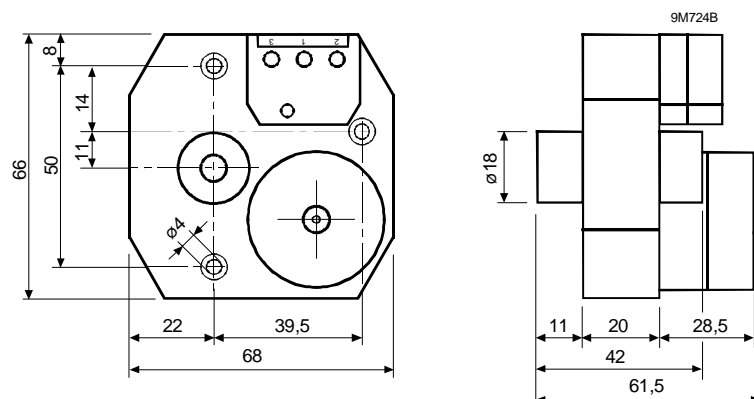
Power supply	Low voltage (SELV, PELV)
Nominal voltage	AC 24 V, 50/60 Hz
– Max. voltage tolerance	± 20 %
Power consumption	1.5 VA
Positioning speed	At 50 Hz = 28 mm/min; at 60 Hz = 33 mm/min
Max. stroke	Depends on application
Force for pull and push	150 N (nominal, at 20 °C); max. force at end-stops 200 N
Noise level	< 35 dB(A)
Maintenance	No maintenance required
Operating life	> 50 000 strokes at ± 50 mm
Weight (including packaging)	0.23 kg
Ambient temperatures	
– Operation	– 20 ... 50°C
– Storage	– 30 ... 70°C
Protection standard	IP20 to IEC529
Protection class	III
Conformity	Meets the requirements for CE marking: EMC 89/336/EEC

Connection terminals



Dimensions

All dimensions in mm



© 1998 Siemens Building Technologies Ltd.