

SYNERGYR[®]

Readout Software

for OZW30 central unit

ACS30

Software package for operation in a WINDOWS environment for remote data readout and remote operation of SYNERGYR central units.

Use

The ACS30 readout software is a component of the SYNERGYR Control & Metering System. It is running on OZW30 central units with software version 2.0 or higher.

For the field of use of SYNERGYR, refer to data sheets 2800 and 2801 (System Overview).

Functions

The ACS30 readout software facilitates:

- Readout and visualization of data from the apartments and the plant:
 - Reading fault status signals from the plant
 - Reading data from the ALC30.128 or ALC30.512 memory card
 - Reading predefined data records and data records configured by the user himself, in tabular form
 - Presenting selected variables over a defined period of time
- Remote operation of central unit

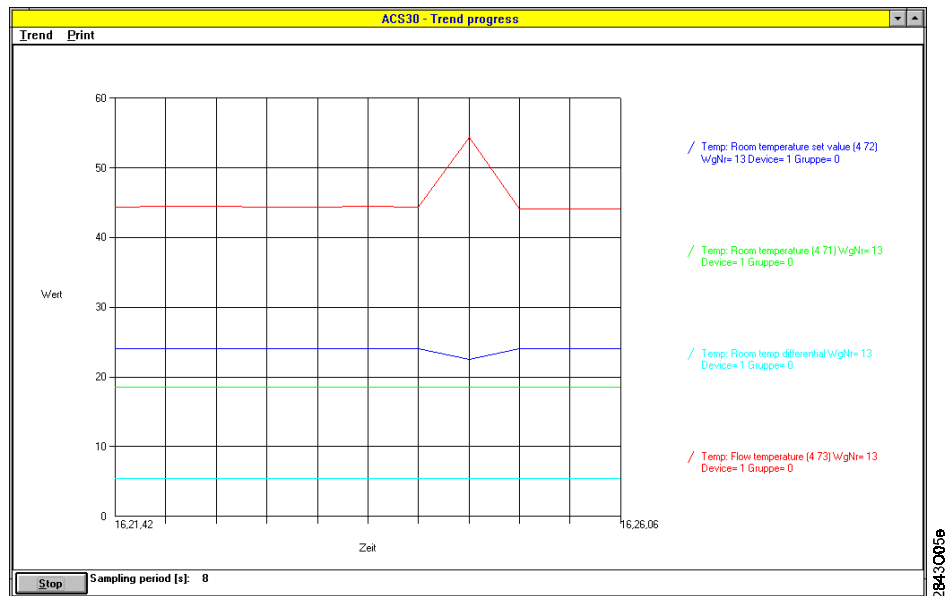
Examples:

Page:	Tenant:	Meter:	H-group:
17.1 - Startup user	X 01	X 01	00

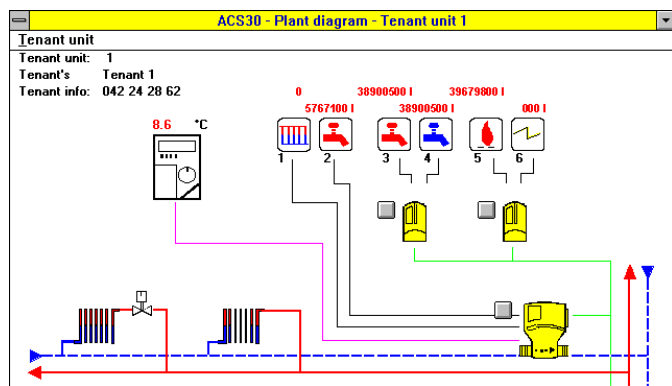
01	Meter number	5156	<input type="checkbox"/>
02	Meter reading	0	<input type="checkbox"/>
58	* Normal room temperature	20 °C	<input type="checkbox"/>
59	* Reduced room temperature	16 °C	<input type="checkbox"/>
76	* Maximum flow rate	200 l/h	<input type="checkbox"/>
80	* Location of valve	0	<input type="checkbox"/>
81	* Heating group	0	<input type="checkbox"/>
81	* Flow zone	1 °C	<input type="checkbox"/>
84	* Control of valve 0=close 1=open 2=auto	2	<input type="checkbox"/>
85	* Selection of function 3=standard	3	<input type="checkbox"/>
86	* Unit factor	63	<input type="checkbox"/>
87	* Metering medium	8	<input type="checkbox"/>
88	* Meter calibration date	****	<input type="checkbox"/>
89	* Type of plant	11	<input type="checkbox"/>
90	* Pulse valency: Numerator (ZZZZ)	****	<input type="checkbox"/>
90	* Pulse valency: Denominator (NNNN)	****	<input type="checkbox"/>

* Standard data set

Remote operation of central unit. Presentation of the operating pages in the ACS30 corresponds to that on the central unit.



Presentation of trend of freely selected variables (recording and visualisation of trend progress)



Basic diagram of a tenant unit

Ordering

When ordering, please give type reference **ACS30**. Supplied is always the latest version.

Delivery is made as a package consisting of

- manual with box
- 3½ in. diskettes (1.44 MB)

Equipment combinations

To communicate with the SYNERGYR central unit, a PC with the following specification is required:

PC	100 % IBM compatible
Type of processor	min. 80386, but 80486 recommended
RAM	min. 4 MB, but 8 MB recommended
Hard disk	min. 4 MB (depending on the number of plants and the amount of data read from the plant)
Screen	VGA standard driver (VGA 3.0), 640 x 480, 16 colours and higher resolutions
Interfaces	serial COM1...COM4, up to 9600 baud
Operating system	– DOS, version 5.0 or higher and WINDOWS, version 3.1 or higher, or – WINDOWS 95, or – OS/2, version 2.1
Diskette drive	3½ in., 1.44 MB

For the graphic presentation of values, processes, trends, etc., a user program is required (e.g. MS-EXCEL), which is suitable for ASCII files

- that consist of several lines and columns
- whose columns are separated by tabs

If the telephone network is used for communication, modems are required. At present, the following types of modems are supported:

- | | |
|----------------------------------|----------------------------|
| - Alcatel md1142 | - Microlink 28.8TQ |
| - Alcatel md1233 | - Microlink 14.4TQ |
| - Bausch CN-9642 SAM / PKM / PCM | - QuickTel XEBA 14.400 |
| - Discovery 2400PM | - US-Robotics Sportster Vi |
| - Discovery 2496PX | - Worldport 2400 |
| - Microlink 2440TL | - Worldport 2400 V.42bis |
| - Microlink 2460TL | - Zyxel U-1496 |
| - Microlink 28.8TQV | - Zyxel U-1496E |

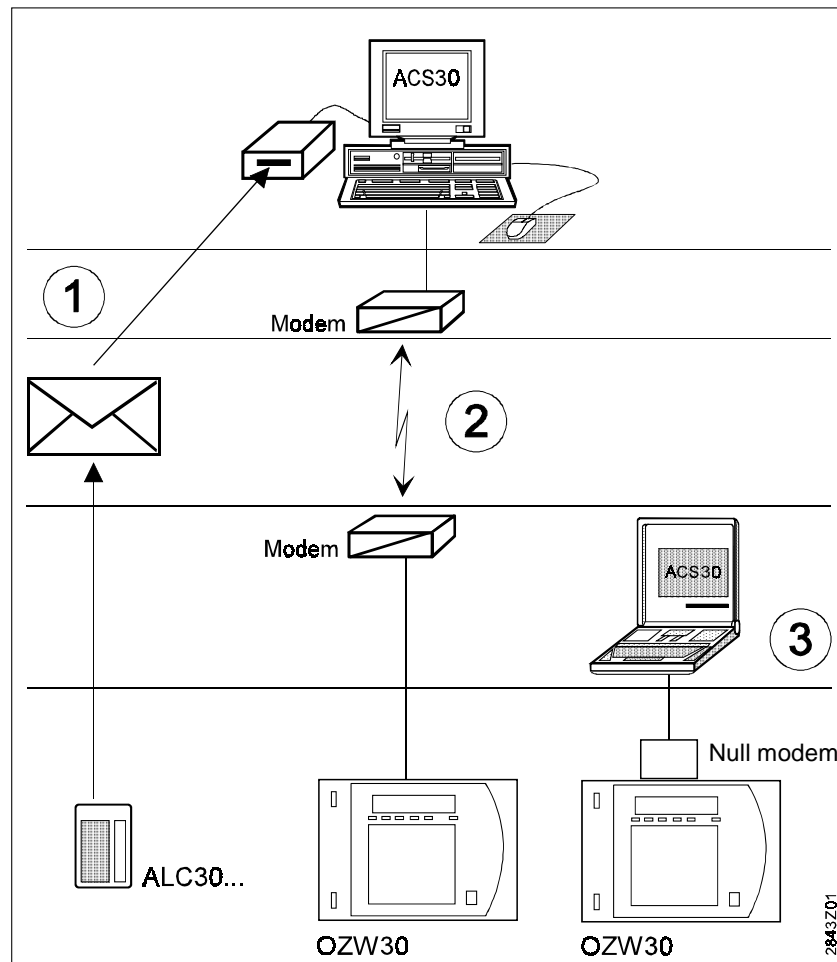
Technical design

The ACS30 readout software can communicate with the central unit, either directly or via modem. For this purpose, the central unit is equipped with an appropriate interface.

Communication choices between central unit and PC:

- Via modem over the public telephone network
- Directly, e.g. by means of a service laptop

The meter readings are always stored in the same data format, no matter if the data are read from the memory card or via the interface.



Communication choices

- 1 The data are read from the ALC30... memory card, which is sent to the billing company
- 2 From the OZW30 central unit, the data are read to the PC via modem
- 3 From the OZW30 central unit, the data are read to the directly connected laptop

Commissioning notes

ACS30 can be installed with the help of the install program supplied with the software package.

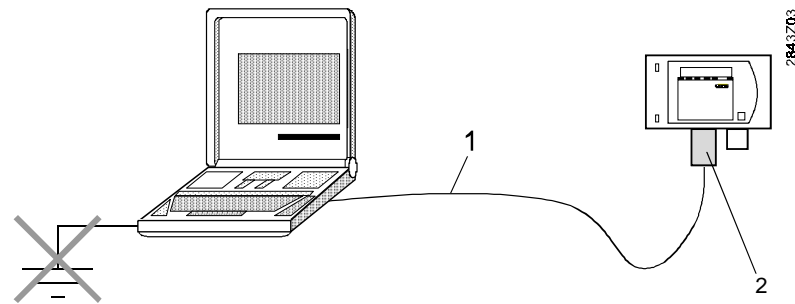
The installation procedure, modem specifications and hardware connections (cables, interfaces, etc.) are contained in manual U2841E.

Caution!

Contrary to Landis & Staefa's recommendation not to earth the SYNERGYR system power supply on the secondary side, plants are sometimes earthed.

In order to prevent damage to the equipment in such cases, a directly connected PC must be galvanically separated from ground, using for instance an interface optocoupler or isolating transformer, or by powering the PC with a rechargeable battery.

This precautionary measure is not required when using central units of series D or higher.



- 1 RS-232 cable
- 2 Null modem

Operating notes

ACS30 features the usual text-sensitive WINDOWS help functions, which give descriptions of commands and menus. For this reason, the manual does not contain any descriptions of the commands and menus.

Typical applications:

- Plant supervision and readout of consumption data via modem and telephone (variant 2 in illustration "Communication choices").
- Recording of data via a direct connection (variant 3 in illustration "Communication choices")